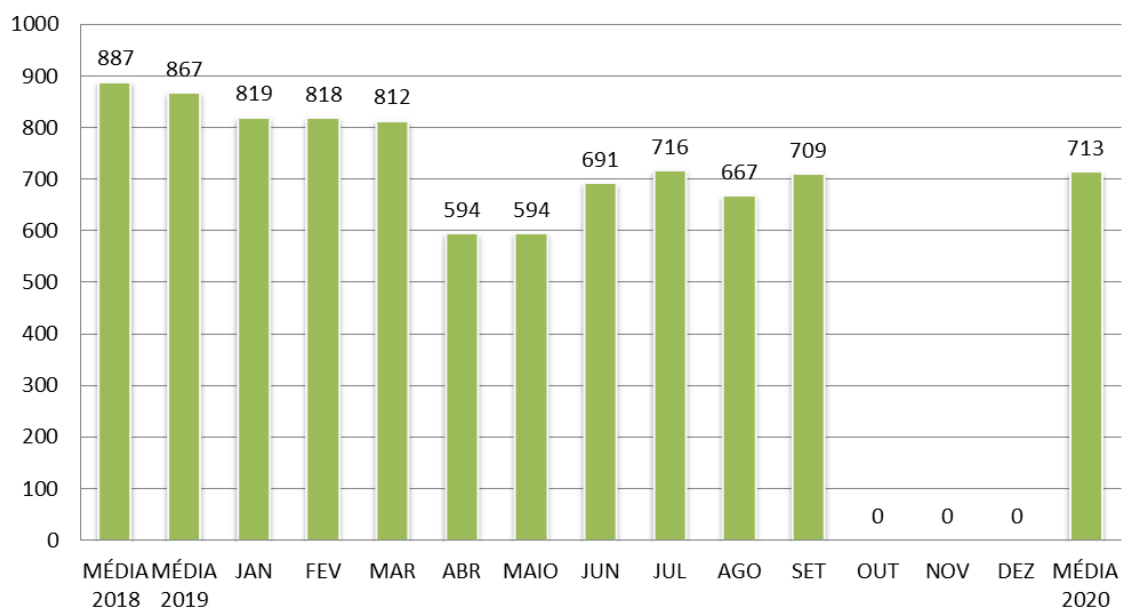
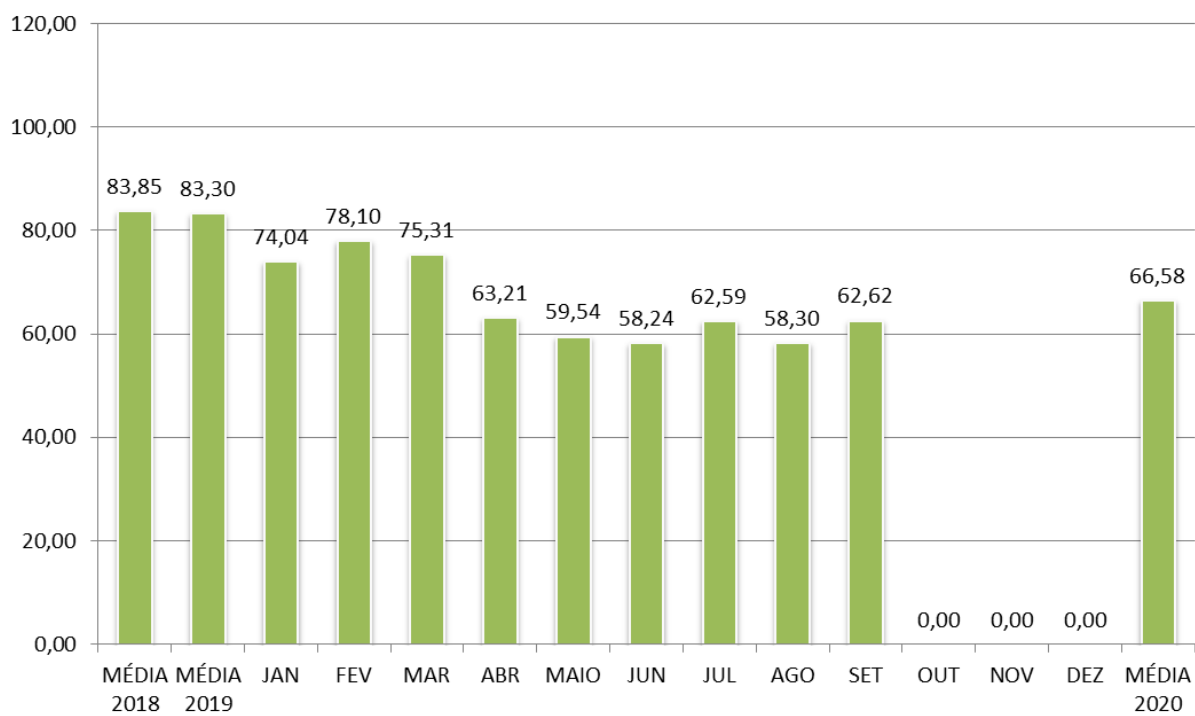


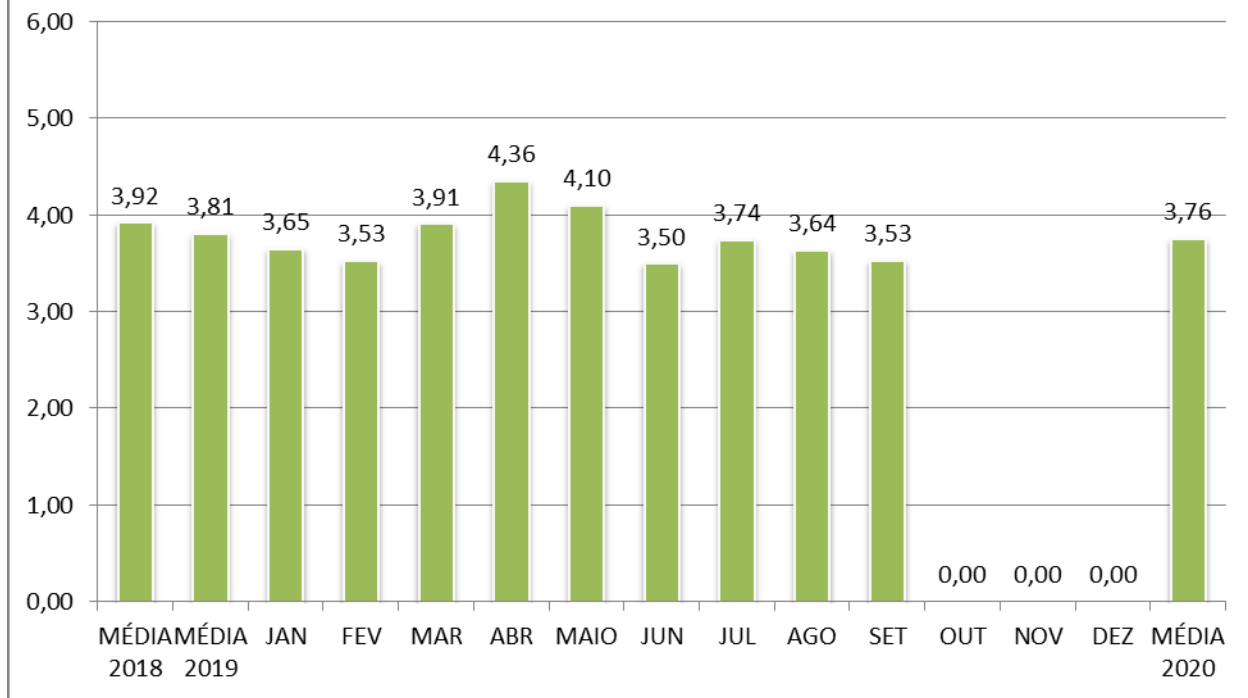
TOTAL DE INTERNAÇÕES



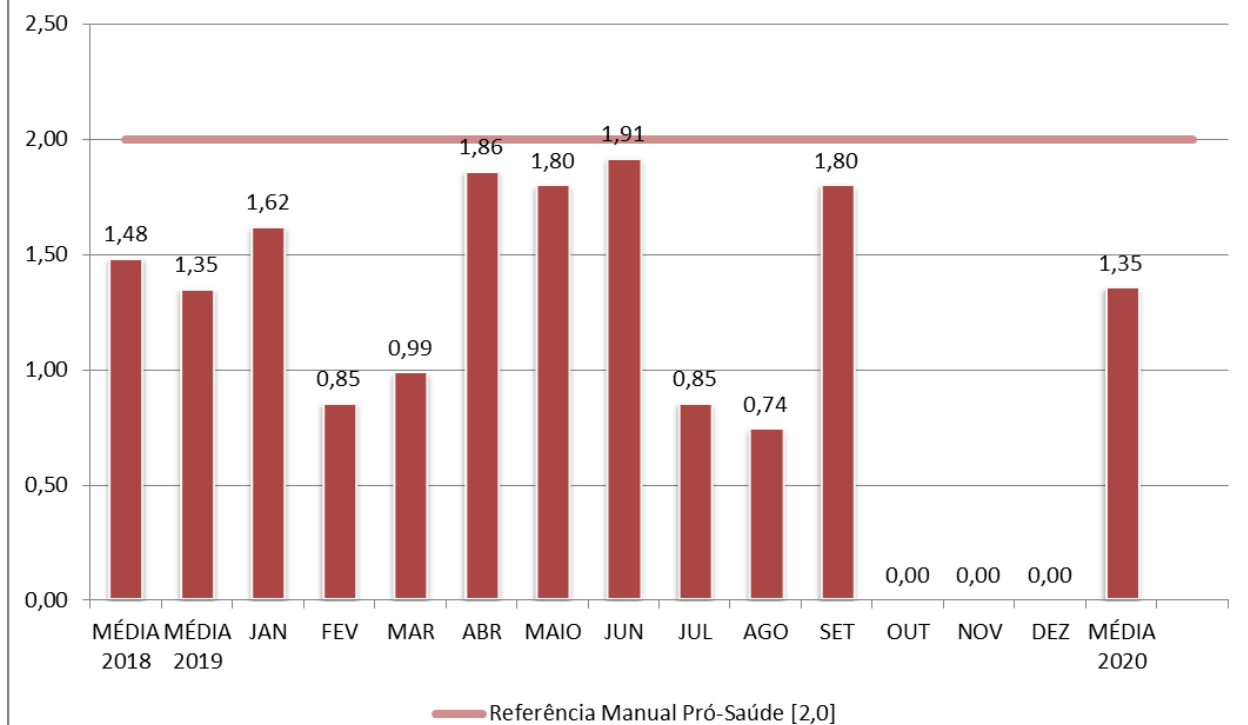
PERCENTUAL DE OCUPAÇÃO GERAL

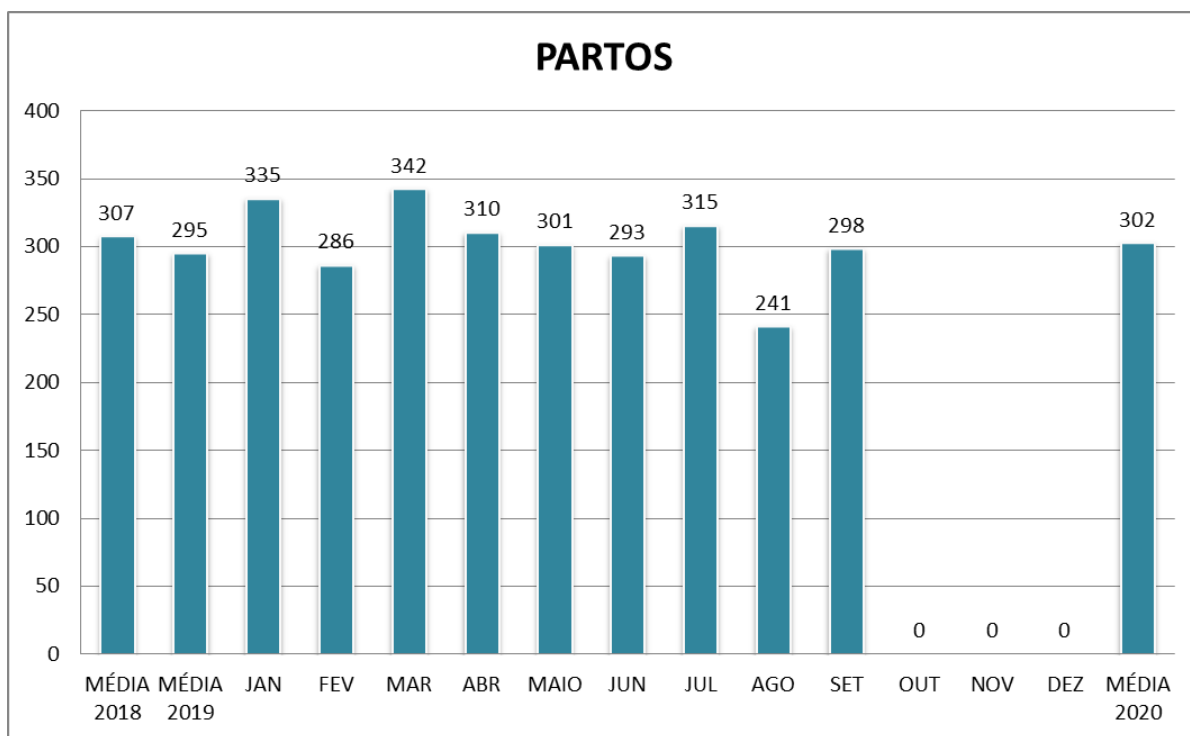
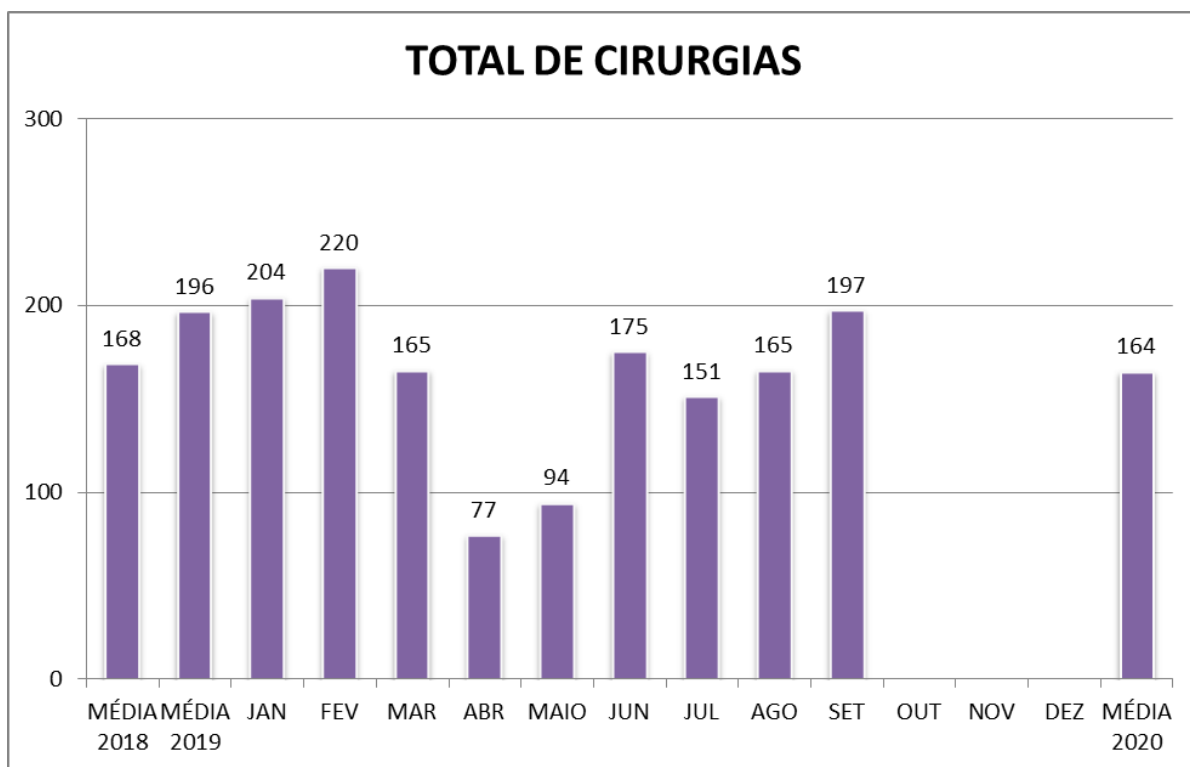


MÉDIA DE PERMANÊNCIA GERAL

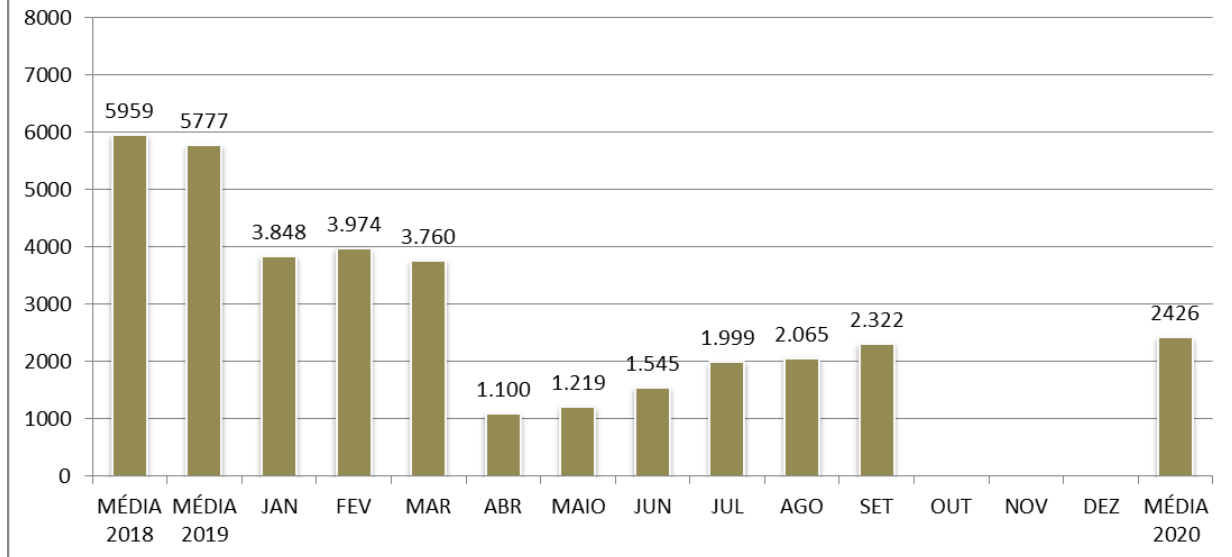


TAXA DE MORTALIDADE GLOBAL





ATENDIMENTOS PRONTO SOCORRO INFANTIL



ATENDIMENTOS PRONTO SOCORRO GO

